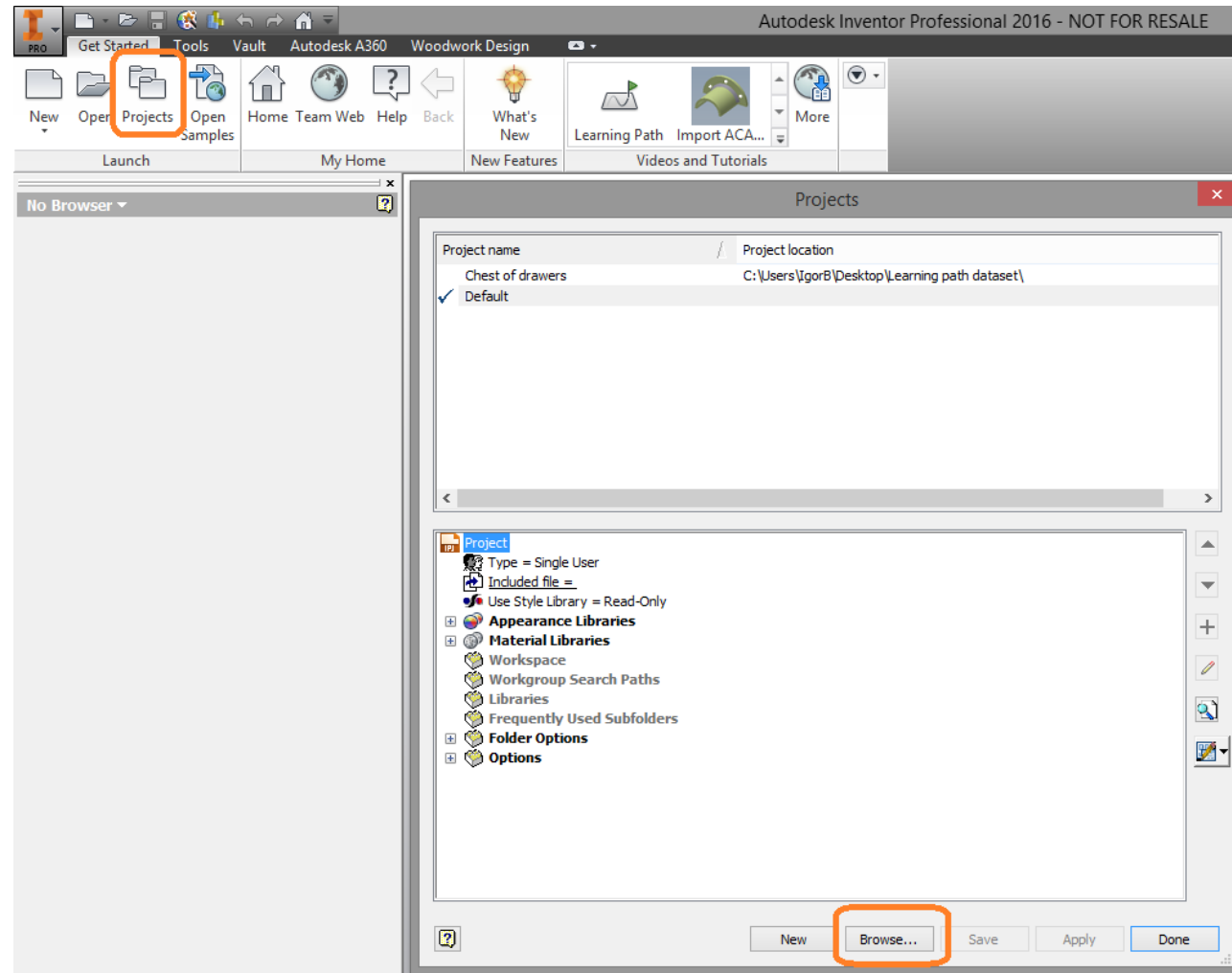


1. Extract the archive in desired location. We recommend to use c:\ drive of your pc.
2. Close all opened files in Autodesk Inventor
3. Use Project > Browse and browse for the C:\Woodwork for Inventor Learning path dataset



4. Open C:\Woodwork for Inventor Learning path dataset.ipj
You are ready to follow our learning path.

